

KLOVER MiK 26

Assembly & Care

Assembly Instructions:

- Place the parabolic dish on a soft, clean surface with the open end facing downward.
- Snap the three handle sections onto the quick release fittings on the back side of the parabolic dish. (You may have to rotate the male connector on the back of the dish to get the locking color to snap into place.) Then attach the three handle sections to each other by inserting the male end of the couplings into the female ends. (You may have to rotate the rear cross bar by 180 degrees.)
- Place the parabolic dish upright on a clean surface.
- Orient the microphone support bar so that the center hex has two small screw head on top and the thumb screw on the bottom. The arrows on the end plates should be pointing upward (toward the two small screw heads) as well. (If the end plates have been removed you may have switch the two end plates in order to properly align them. There are small flats on the connectors that should match. They should both be horizontal or both vertical.)
- Release one end plate from the microphone support bar and slide the other end plate over two guide bushings on the front of the parabolic dish, then slide the first end plate over the guide bushings and into the quick release coupling.
- Insert the microphone into the microphone support bar, placing the pickup point **four (4) inches below (behind) the front face of the parabolic dish**, and tighten the retaining screw.
- With the printing on the shoulder strap facing upward snap the buckle on each end the strap into the buckle on the right hand and left hand handles.
- See the images on the back of this sheet for ideas on mounting the electronics to the parabolic.
- Use the slots along the edge of the dish to zip-tie down the cables.

For video demonstrations of the assembly process please visit our support page at:

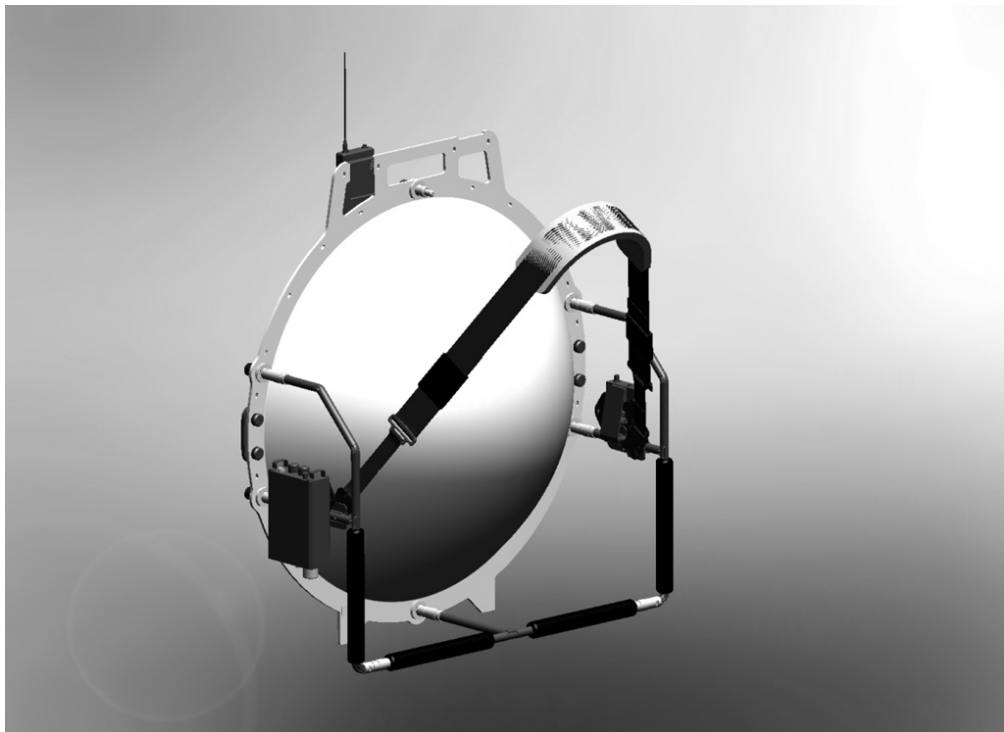
<http://kloverproducts.com/html/support.html>

Handling Instructions:

- Always use the top handles or two of the rubber grips to lift the parabolic.

Cleaning Instructions:

- Use only an ammonia-free cleaning product, such as “Sparkle,” to clean the parabolic dish.



Klover Products Inc.
5807 W Fenrick Rd
Janesville, WI 53548
(888) 299-9009
www.KloverProducts.com
support@KloverProducts.com